

**STRATFORD
EAST**.com THEATRE ROYAL
— STRATFORD EAST
...a people's theatre

April 2014 – March 2015

REVIEW

A YEAR OF QUOTES AND COMMENT

A PEOPLE'S THEATRE

We would like to thank the following for their SUPPORT

MAJOR DONORS

Scrutton Estates Ltd
The Sahara Care Charitable Trust

PIONEERS

Andrew Cowan
Angela and Stephen Jordan
Carol Lake
Elizabeth and Derek Joseph
Sabine Vinck

THE VISION COLLECTIVE

Amanda and James Hochman
Andrew and Amanda Grenville
Barbara Ferris
Caroline and Charles Pridgeon
Danielle Whitton
Derek Paget
Ed Ross
Hazel Province
Hedley G. Wright
Jan and Bill Smith
Jonathan Tyler
Lady Stratford
Mansell Bouquet Ltd
Murray Melvin
Nick and Wendy Jakob
Rachel Potts for Jon Potts
Sue Fletcher
Toni Palmer

And all those who wish
to remain anonymous

BUSINESS SUPPORTERS



Bloomberg



Altair Ltd
Attic Storage and Removals Solutions
Countryside Properties Plc
Devonshires Solicitors
English Cities Fund
Get Living London
Hotel Novotel London Excel
HUB Group
Tate & Lyle Sugars Plc

TRUSTS AND FOUNDATIONS

Esmée Fairbairn Foundation
Garfield Weston Foundation
Helen Hamlyn Trust
Heritage Lottery Fund
Jack Petchey Foundation
Paul Hamlyn Foundation
The Andrew Lloyd Webber Foundation
The Gibbs Charitable Trust
The Mackintosh Foundation
The Theatres Trust

We would also like to acknowledge the
generous support of the Monument Trust.

Welcome TO A YEAR OF QUOTES AND COMMENT

**STRATFORD
EAST** THEATRE ROYAL
STRATFORD EAST
...a people's theatre

4-5 : Forewords
6-9 : Support Us

10-11	Apr 2014	Kingston 14 28 Mar – 26 Apr 2014
12-13	May 2014	Fings Aint Wot They Used Tbe 8 May – 8 Jun 2014
14-15	Jun 2014	Angelic Tales 16 – 21 Jun 2014
16-19	Jul 2014	Young People's Studio Season 24 – 26 Jul 2014
20-21	Aug 2014	Monologueslam Uk
22-23	Sep 2014	Spoiling 29 Aug – 13 Sep 2014
24-25	Oct 2014	Rhetorical 14 – 18 Oct 2014
26-27	Oct 2014	Joan Littlewood Centenary 6 Oct 2014
28-29	Nov 2014	The Infidel – The Musical 3 Oct – 14 Nov 2014
30-31	Dec 2014	Beauty and The Beast 29 Nov 2014 – 17 Jan 2015
32-33	Jan 2015	Stratford East Singers 14 Jan 2015
34-35	Feb 2015	Oh What a Lovely War 29 Jan – 7 Feb 2015
36-37	Mar 2015	Antigone 19 Feb – 14 Mar 2015
38-42		People
43		Bar Programme

Theatre Royal Stratford East, Gerry Raffles Square, London E15 1BN t: 020 8534 7374
f: 020 8534 8381 i: 020 8534 0310 e: theatreroyal@stratfordeast.com www.stratfordeast.com

Artistic Director: Kerry Michael **Executive Director:** Mary Caws **Deputy Artistic Director:** Dawn Reid

Board: Carol Lake (Chair), Andrew Cowan, Michael Eboda, Claire Evans, Derek Joseph, Jo Melville,
Paul O'Leary (Vice-Chair), Mark Pritchard, Hazel Province, Lady Stratford, Sabine Vinck.



Supported using public funding by
**ARTS COUNCIL
ENGLAND**



Pioneer Theatres Limited. Registered Office: Theatre Royal Stratford East, Gerry Raffles Square, London E15 1BN.
Registration Number 556251. Charity Number 293801. VAT Number 248 9343 27.



FOREWORD

BY KERRY MICHAEL: ARTISTIC DIRECTOR
OF THEATRE ROYAL STRATFORD EAST

establishment. **We played to 86% capacity in the year.** In an area that has the lowest arts engagement in England. So there is still room to bring a friend and introduce them to our theatre.

The team here work with passion and purpose. They are intelligent, conscientious, hard-working and fun-loving. And I am extremely indebted to them. Our success is a collective one.

I hope you enjoy looking back over 2014-15. I'm particularly proud of how we've created new work that is important, political and urgent, as well as world-class and hugely entertaining for all our different audiences.

In this year we received an Arts Council uplift, one of only a handful to do so. For us, it was in recognition of our consistent track record in making quality work by, and for, our diverse community. We are immensely proud to have the most diverse and young audience of any London theatre. If you have been in our auditorium you have been part of a collective of people who aren't traditional theatregoers. You have a desire to see new stories and probably identify yourself as not part of the

Our Stratford East Singers made their Saturday night live TV debut; and our young people – 3000 of them last year – continue to grow as artists, producers and audiences. They inspire and challenge us. They are blood running through our veins.

If you like what you read please consider supporting us. We are a charity with an important civic mission. We have to look to a varied approach to income. Our strong box office receipts go some of the way. Our support from Arts Council England and our important partner the London Borough of Newham is vital to our success. And so is our growing portfolio of business and individual partnerships. Please think about how you, or the people you know, can work with us going forward.

We look forward to welcoming you to our theatre in 2015 and beyond.

Kerry Michael
Artistic Director

FOREWORD

BY CAROL LAKE: CHAIR OF
THEATRE ROYAL STRATFORD EAST

Over the last year we have been celebrating Joan Littlewood's centenary and the contribution she made to British theatre and to the nation. The continued work of Theatre Royal Stratford East is a living legacy of all she achieved. In early summer *Fings Ain't Wot They Used T'be* attracted big, enthusiastic audiences and our Olivier-nominated production of *Oh What a Lovely War* returned briefly before continuing on an extensive UK tour. We also celebrated Joan as part of the national Fun Palaces weekend in October and were delighted when the Royal Mail issued a stamp to commemorate her.

As much as we have looked back to celebrate our heritage, we have very much retained an eye on the future. As East London continues to undergo rapid and significant change, we have continued to challenge ourselves to reflect this in our ambitions. Being in the midst of such a dynamic area gives us much to learn and much to share and we are delighted with the evolving relationship with the National Theatre which has seen us connecting on a range of topics including diversity, young people's work and audience development.

Partnerships are of growing importance to us and we deeply appreciate the recognition for our work with diverse audiences and artists by Arts Council England – and to be **one of the few National Portfolio Organisations to receive an uplift for 2015-18**. We are also extremely grateful to London Borough



of Newham for their continued support in difficult economic times.

Our fundraising team have gone from strength to strength generating vital support from a wide range of sources including generous individuals, businesses, Trusts and Foundations. Many thanks to all our supporters for their much needed contributions and for the confidence they show in our ability to deliver great work.

Theatre Royal Stratford East is a truly remarkable and outstanding organisation, with great energy and vision. Thank you to everyone who helps to make this a very special place: the leadership team and staff, the actors, musicians and poets; the directors, technicians and visiting productions; the audiences who come to see us and the upcoming talent we work with who truly are our future. Joan would be proud.

Carol Lake
Chair



OUR VISION IS UNLIMITED BUT OUR FUNDING IS NOT

WE ARE AN AWARD-WINNING THEATRE WITH AN INTERNATIONAL REPUTATION, ROOTED IN OUR COMMUNITY FOR OVER 50 YEARS. WE ARE PROUD OF THE POSITIVE CONTRIBUTION WE MAKE TO PEOPLE'S LIVES AND TO THE VIBRANT THEATRE SECTOR, PRODUCING NEW WORK THAT SPEAKS TO THE PEOPLE OF BRITAIN IN ALL ITS DIVERSITY.

WHY WE NEED YOUR SUPPORT

'We would like to say a big 'thank you' to the individuals, trusts and companies who have supported us to date and hope you may be inspired to join them.'

We are a charitable organisation based in Newham that believes in the ability of theatre to achieve radical change. In recognition of the important and ground-breaking work we do with diverse audiences and artists, we were one of just a few of Arts Council England's National Portfolio Organisations to be awarded an increase in funding for 2015 – 18. We also receive core funding from the London Borough of Newham. We are immensely grateful to them and their support is crucial to our work.

In addition to our public funding, we also generate income from ticket sales and other retail. **However, we still need to raise significant funding from other sources to continue our important work.**

Above: A Theatre Royal Stratford East Audience
Photo: Robert Day

INDIVIDUALS

'We support Theatre Royal Stratford East because we have long established roots in the borough, we have enjoyed the performances we've seen and want to give back to the community.'

Barry Scrutton, Scrutton Estates Ltd.



Barry Scrutton, Major Donor, with wife Ann
Photo: Robert Day

We are always delighted to hear from individuals looking to join our growing family of supporters. Support from individuals is essential in delivering our programme of work on and off the stage, to the standard that our audiences have come to expect. There are many ways to show your support: join our *Vision Collective* and receive exclusive benefits each year; become a *Pioneer* and give directly to the project you are most passionate about; *name a seat* as a gift to, or in memory of a loved one; or *leave a Legacy* by remembering us in your will.

TRUSTS AND FOUNDATIONS

We are immensely appreciative of the support we receive from Trusts and Foundations. Much of our vision is underpinned with bringing to the fore future generations of artists and cultural leaders; and creating opportunities to engage new audiences with theatre – strategic work that is often difficult to fund through other sources. It is this behind-the-scenes work that allows us to deliver an exciting programme of theatre and we invite Trusts and Foundations who share our vision to join us in safeguarding the future of British theatre.



Musical Theatre Initiative workshop, supported by the Andrew Lloyd Webber Foundation

To talk to us about how you could support us, please call 0208 279 1124 or email us at development@stratfordeast.com



Andrew Wiceman, Chairman of Telford Homes, and guests
Photo: Robert Day

BUSINESS SUPPORT

'We pride ourselves on our commitment to understanding and meeting the business objectives of our corporate partners. Our approach is to work with you to develop innovative and tailored ways for you to support us that fulfil your needs.'

By working with us we can assist you in making deeper connections with the East London community as well as reaching our audiences from across the UK and abroad. We can also help you meet your CSR aims and can offer a wide range of benefits which include brand profile, naming opportunities, PR and press coverage, staff engagement, client hospitality and B2B networking.

Telford Homes Case Study

Telford Homes Plc is a successful property developer with major developments across London including their local apartment development, Stratford Plaza. We have been delighted to work with their team via our bespoke Business Partnership, offering engagement opportunities for their staff and clients. Telford Homes were also sponsors of 'Beauty and the Beast', which saw thousands of families and school children coming through our doors to enjoy our festive show.



'Telford Homes are heavily involved in the regeneration of Stratford town centre and we are particularly excited to continue working with Theatre Royal Stratford East in the coming year. The engagement of our staff and clients with TRSE has been incredible and surpassed our expectations, particularly in bringing people together from across the business to enjoy an evening at the theatre. Theatre Royal Stratford East is a fantastic venue for those living in Stratford and further afield and I am sure our support will benefit both organisations in the future'.

Jon Di-Stefano, Chief Executive, Telford Homes



'Theatre Royal Stratford East is an award-winning theatre which has played an important role in opening up the arts to our residents. The theatre's support of our Every Child a Theatregoer Programme has enabled a brand new audience to experience world-class productions on their door step and helped to spark the imaginations and creativity of our young people.'

Sir Robin Wales, Mayor of Newham



Young People's Studio Season

ArcelorMittal Case Study

ArcelorMittal provide significant support for our weekly workshops with young people, including those who are not in full-time education or who are at risk of disengaging from formal learning. By supporting this vital work, together we have been able to bring our young people closer to the regeneration taking place on their doorstep. As a symbol of this regeneration in East London, the iconic ArcelorMittal Orbit serves as part of the daily landscape for our community.



'The aims of Theatre Royal Stratford East's Young People's Workshops – particularly those around improving self-confidence and communications skills, with the objective of helping participants to re-engage – are a natural fit with the overall re-generation effort, symbolised by the ArcelorMittal Orbit. In East London, Theatre Royal Stratford East continues to stand out for us, with its combination of community focus and high-quality theatre.'

Ian Loudsen, Head of Brand Worldwide, ArcelorMittal

Photo Credit: Robert Day

April 2014
KINGSTON 14

**GOLDIE STARS IN A GRIPPING NEW
 PLAY SET IN MODERN DAY JAMAICA**

Presented by
 Theatre Royal Stratford East
 28 Mar - 26 Apr 2014

WRITER ROY WILLIAMS
 DIRECTOR CUNT DYER
 STAGE & COSTUME
 DESIGNER ULTZ
 ASSOCIATE DESIGNER
 SADEYSA GREENAWAY-
 BAILEY
 LIGHTING DESIGNER
 JO JOELSON
 SOUND DESIGNER
 RICHARD HAMMARTON

ASSISTANT DIRECTOR
 STEPHEN MACAULAY
 FIGHT DIRECTOR
 ALISON DE BURGH
 CAST ASHLEY CHIN, BRIAN
 BOVELL, CHARLES VENN,
 DEREK ELROY, GAMBA COLE
 GOLDIE TREVOR LAIRD,
 TYSON OBA
 SUPERNUMERARY
 FRANKLIN NWAOKOLO



**'Compelling...
 Pulverising.'**
THE GUARDIAN

Roy William's spirited,
 raging drama.
THE INDEPENDENT

'Brilliant writing.'
TWITTER



**'... a fierce, gripping,
 funny look at police
 corruption, machismo
 and moral compromise.'**
TWITTER

**'Fantastic.
 Excellent plot
 and acting.'**
AUDIENCE MEMBER

I loved the interactions
 the audience had
 with characters in the
 play. Not something
 you see all the time!
AUDIENCE MEMBER

It was amazing,
 I felt transported to
 Jamaica. VERY talented
 actors in this place!
AUDIENCE MEMBER



**'A comedic and
 thought-provoking
 drama. It's a
 must see!'**
THE VOICE

Now gone, but #Kingston14
 certainly not forgotten.
TWITTER

**'Kingston 14' has guts, wit and vigorous
 performances... Williams' script is racy,
 wry... painfully real.'** **EVENING STANDARD**

★★★★ **Evening Standard**
 ★★★★★ **The Times**
 ★★★★★ **The Observer**
 ★★★★★ **Financial Times**
 ★★★★★ **Whatsonstage.com**



MUSIC AND LYRICS LIONEL BART
BOOK **FRANK NORMAN**
DIRECTOR **TERRY JOHNSON**
MUSICAL DIRECTOR/SCRIPT
ADAPTATION/ARRANGEMENTS
ELLIOT DAVIS
SET DESIGNER **BILL DUDLEY**
CHOREOGRAPHER
NATHAN M WRIGHT
LIGHTING DESIGNER **BEN ORMEROD**
SOUND DESIGNER **GARETH OWEN**
ASSOCIATE DIRECTOR **ADAM LENSON**

ASSISTANT MUSICAL DIRECTOR
JOE LOUIS ROBINSON
CAST CHRISTOPHER RYAN, GARY KEMP,
GARY WATSON, JESSIE WALLACE,
JOANNA WOODWARD, JOHN OLOHAN,
MARK ARDEN, RUTH ALFIE ADAMS,
RYAN MOLLOY, SARAH MIDDLETON,
STEFAN BOOTH, STEVIE HUTCHINSON,
SUZIE CHARD, VIVIEN CARTER,
WILL BARTON
BAND **BRYAN SMITH, JAKE NEWMAN,**
JOE LOUIS ROBINSON, TOM CLARE

May 2014 FINGS AINT WOT THEY USED T'BE

THE WITTY AND WARM-HEARTED MUSICAL
SET WITHIN A WEST END UNDERWORLD OF
GAMBLERS, SPIVS AND PROSTITUTES

Presented by
Theatre Royal Stratford East
with Elliot Davis, Paul Tyrer
& Jamie Clark, and Ros Povey
for Fings Productions Ltd
8 May – 8 Jun 2014

'It was excellent – all
the cast were brilliant.'
AUDIENCE MEMBER

'Fantastic, great
fun, it's what
the theatre is
all about.'
AUDIENCE MEMBER



'Made me purr with
pure pleasure.'
DAILY TELEGRAPH

'Slick and stylish...
they don't make
musicals like
this anymore.'
EVENING STANDARD

'Sharp fresh and surprising.'
WHATSONSTAGE.COM

'Irresistible.'
DAILY MAIL

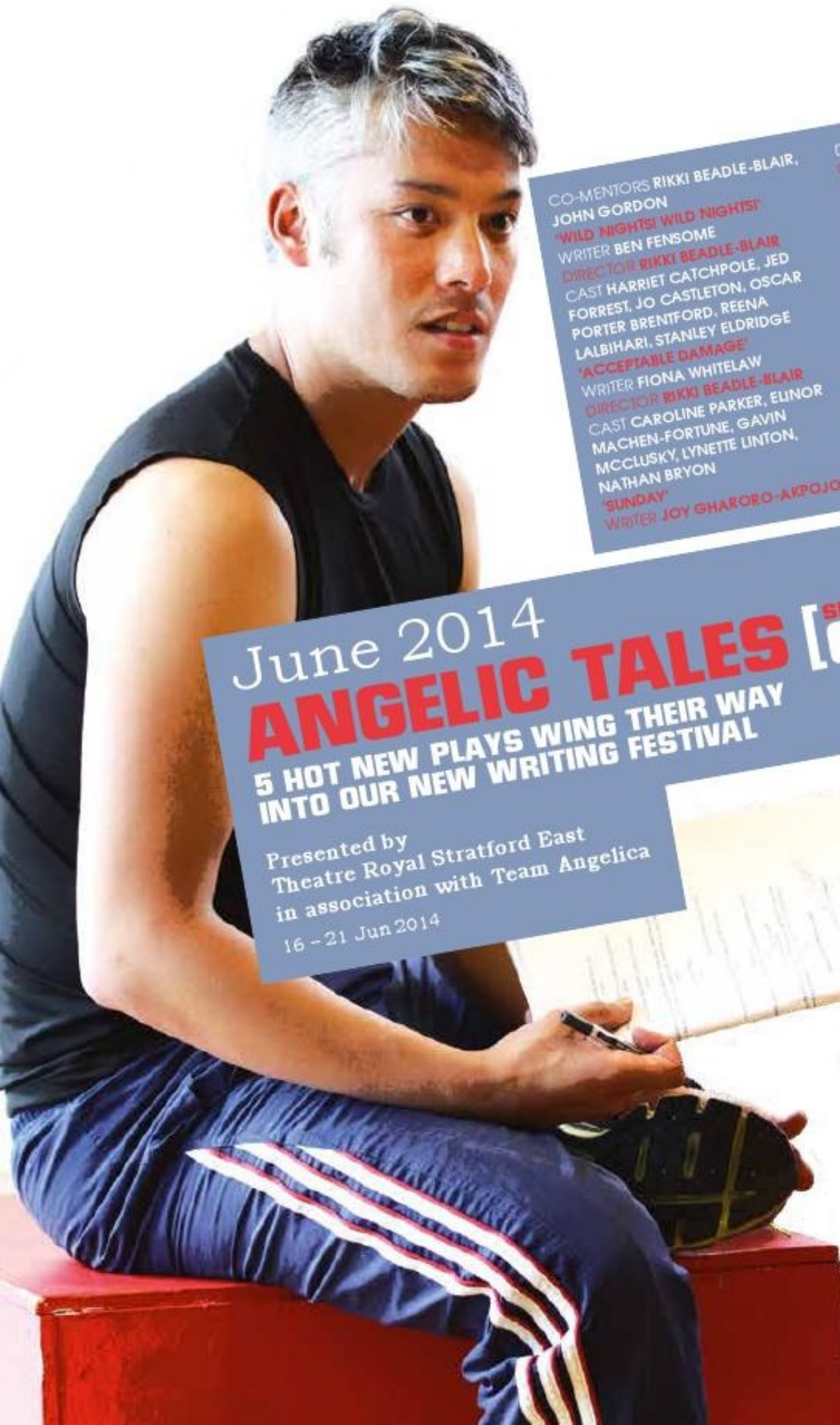
'Terry Johnson's witty
and rollicking revival.'
THE INDEPENDENT

'I thought it was brilliant...
a truly joyful experience.'
AUDIENCE MEMBER



'...one of the best shows we have
seen for a long time, and we do
go to the theatre quite a lot. Your
staff were lovely...' AUDIENCE MEMBER

★★★★ The Times
★★★★ Daily Telegraph
★★★★ Evening Standard
★★★★ Daily Mail
★★★★ The Independent
★★★★ Time Out
★★★★ Sunday Times
★★★★ Sunday Express
★★★★ TheatreCat
★★★★ The Upcoming



CO-MENTORS RIKKI BEADLE-BLAIR,
JOHN GORDON
'WILD NIGHTS! WILD NIGHTS!'
WRITER BEN FENSOME
DIRECTOR RIKKI BEADLE-BLAIR
CAST HARRIET CATCHPOLE, JED
FORREST, JO CASTLETON, OSCAR
PORTER BRENTFORD, REENA
LALBIHARI, STANLEY ELDRIDGE
'ACCEPTABLE DAMAGE'
WRITER FIONA WHITELAW
DIRECTOR RIKKI BEADLE-BLAIR
CAST CAROLINE PARKER, ELINOR
MACHEN-FORTUNE, GAVIN
MCCLUSKY, LYNETTE LINTON,
NATHAN BRYON
'SUNDAY'
WRITER JOY GHARORO-AKPOJOTOR

DIRECTOR DAWN REID
CAST KEMI LOFINMAKIN,
LORNA GAYLE, MOJISOLA
ADEBAYO, NICOLA TAYLOR,
TOYIN ALASE
'SWEATING IT OUT'
WRITER AARON GORDON,
DIRECTOR RIKKI BEADLE-BLAIR
CAST CARLA HARRISON
HODGE, NICK KORSA, PARIS
ROBIN, TOM ROSS-WILLIAMS
'JAMAICA BOY'
WRITER STEPHEN HOO
DIRECTOR RIKKI BEADLE-BLAIR
CAST DANIEL YORK, JOHN
OMOLE, MARCUS GRIFFITHS,
NATALIA HINDS, STEPHEN HOO,
YVONNE GIDDEN

June 2014
ANGELIC TALES [05]
5 HOT NEW PLAYS WING THEIR WAY
INTO OUR NEW WRITING FESTIVAL
Presented by
Theatre Royal Stratford East
in association with Team Angelica
16 - 21 Jun 2014

TEAM ANGELICA



I found the whole evening extremely inspiring. The actors were talented and very committed. The show was shocking and powerful. Rikki's introduction was full of energy...

AUDIENCE MEMBER ON 'WILD NIGHTS! WILD NIGHTS!'

...an honest and political piece. It opened the audiences' eyes to the ongoing prejudice that happens to people with invisible disabilities. Refreshing to see a piece about something so relevant today and that hasn't been explored.

AUDIENCE MEMBER ON 'ACCEPTABLE DAMAGE'



Fantastic. It was strong and dealt with issues not normally spoken about in African culture. The cast were great. I felt proud of what Joy wrote, I loved her courage and sincerity.

AUDIENCE MEMBER ON 'SUNDAY'

The actors were fantastic and it was very well staged for a script-in-hand performance. The play has a unique angle - the Chinese - Jamaican experience.

AUDIENCE MEMBER ON 'JAMAICA BOY'

'Excellent - a very well-acted performance that really made you think about the issues of body image, the way we all view others, and the way many of us pretend to be someone we are not, in order to gain acceptance... it made you think about the issues raised, not just whilst watching the performance but once you were out of the theatre as well.'

AUDIENCE MEMBER ON 'SWEATING IT OUT'



Photo: Riley Clark Photography

July 2014 YOUNG PEOPLE'S STUDIO SEASON

SOME OF THE BEST OF OUR YOUNG PEOPLE'S WORK

Presented by
Theatre Royal Stratford East
24 - 26 Jul 2014

YOUNG PEOPLE'S SEASON GIVING OUR
YOUTH COMPANIES A CHANCE TO SHINE
ON OUR STAGE
YOUTH THEATRE BOYS & GYALS
POETS PLATFORM WORD PLAY
YOUNG ARTISTS LAB FLAT LIVES

Young People's Workshops
supported by:



ArcelorMittal



Garfield Weston
FOUNDATION

HHT THE HELEN HAMLYN TRUST

'It has been a profound
pleasure working with
you, I have learned so
much and feel so grateful
for everything you do to
nurture and welcome young
people who love theatre.'

PARTICIPANT

'Thanks again for giving the
boys this opportunity.'

TEACHER



'Thank you for everything, for the
opportunity and for opening doors
for me, you've shown me what I
want to do.'

PARTICIPANT

'Thank you so much for the support,
the advice, your belief and trust in
me, you have helped me transform
as an actor, performer and a person.'

PARTICIPANT



'Thank you so much
for everything you
have done for us, you
have been much more
supportive than you
could imagine.'

PARTICIPANT

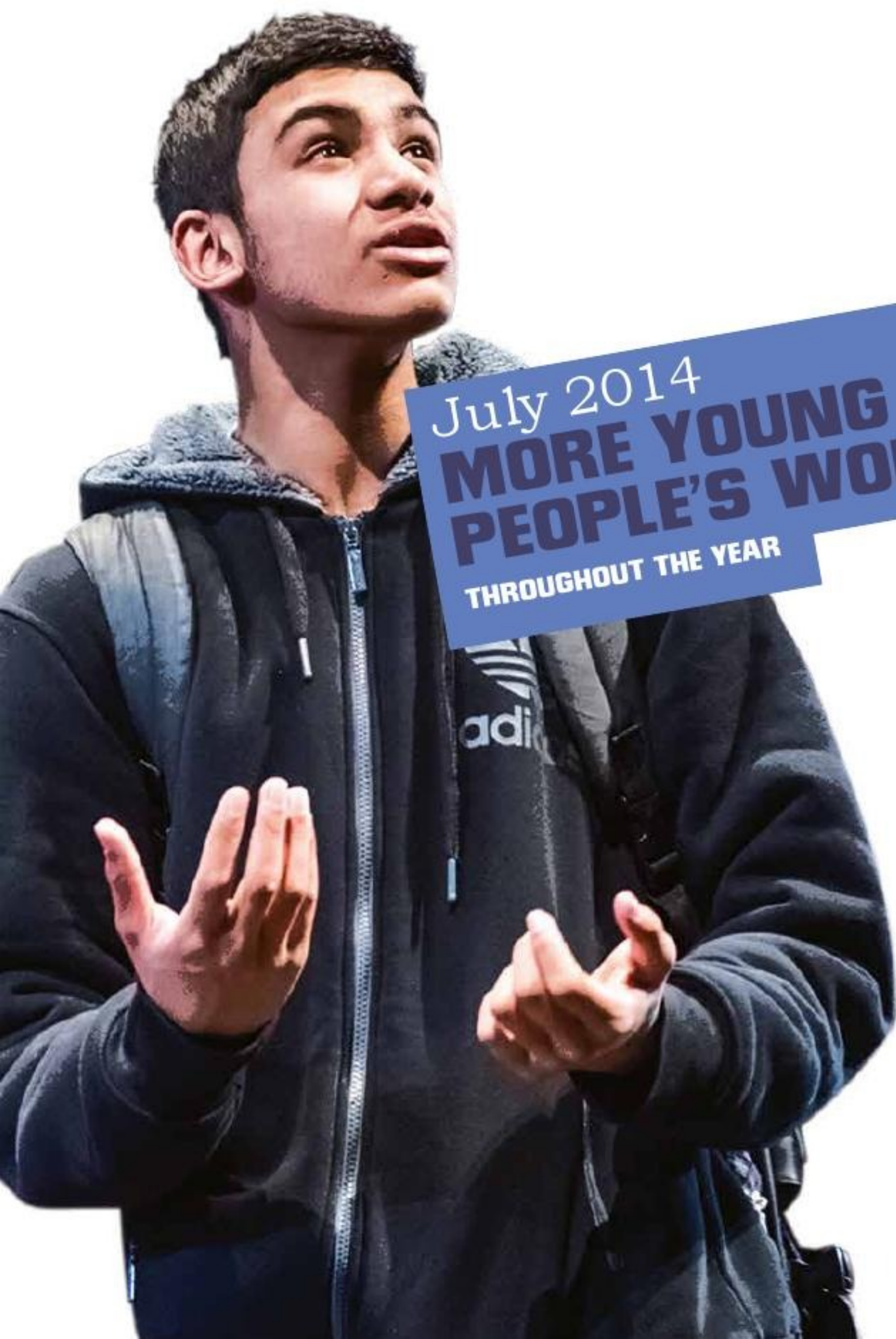
'Thank you so much for this amazing
opportunity. You have helped me to
achieve my dream.'

PARTICIPANT



'Young people are at the heart of Theatre Royal Stratford East and
have been since Joan Littlewood pioneered the modern concept
of youth theatre. It is a constant pleasure and honour to see our
young people grow as artists and find a voice in society.'

KERRY MICHAEL, ARTISTIC DIRECTOR, THEATRE ROYAL STRATFORD EAST



July 2014
**MORE YOUNG
 PEOPLE'S WORK**
 THROUGHOUT THE YEAR

ANTIGONE SCHOOLS FESTIVAL

'Thanks for letting us be a part of the Newham Festival this year. My students really enjoyed it and came out begging to be a part of it next year. It was great to have the director of 'Antigone' come to praise us after the show. Thanks so much for all your work and support.'

TEACHER

'Thank you for the super experience of the Schools Festival. I am so sorry that I had to rush off after our piece. I was very proud to be part of the whole experience and enjoyed watching all the variations on the theme. Well done for bringing everything together and for giving a platform to all these young creatives.'

SUZANN MCLEAN,
 DIRECTOR OF YOUNG
 AND TALENTED

Newham Sponsor: Schools
 and Youth Groups Festival



JUNIOR MONOLOGUE SLAM

'Thank you for being so warm and encouraging over my time at Monologue Workshops. I've learnt a great deal from watching how you work and I feel even more determined to work in this field. You've made the last two months a truly exciting and inspirational experience so thank you!'

VOLUNTEER

'Just want to say THANK YOU for being there and all. You guys are pretty awesome! I know you've heard all that **** before 'you have potential', 'you can do it!', 'I'll be back I'll be sure to come when the next one is up.'

PARTICIPANT



'Just like to say a Big Thank you for seeing the young members of our youth club. The parents had a good feeling about the experience and want to submit their children again (to the Junior Slam). Once again I thank you and the judges.'

TEACHER

'They get so excited before going on stage. It's a unique experience for them - to be seen by professionals from the industry and share the Green Room with TV actors.'

JAN SHARKEY-DODDS,
 HEAD OF YOUNG PEOPLE'S
 WORK, THEATRE ROYAL
 STRATFORD EAST



'Thanks very much for the invite and ticket (and hospitality!) at Friday's event. Congratulations to you all, I was really impressed with what I saw, the young people had clearly had a profound debate around some of the issues and their commitment and hard work really shone through. I was moved to tears a couple of times!'

GABRIELLE FORSTER-STILL, DEPUTY HEAD LEARNING AND PARTICIPATION, ROYAL OPERA HOUSE



August 2014 MONOLOGUESLAM UK THE ULTIMATE ACTOR'S SHOWCASE

Presented by
TriForce Promotions and
Theatre Royal Stratford East
14 Apr 2014 / 2 Jun 2014 / 18 Aug
2014 / 27 Oct 2014 / 15 Dec 2014 /
2 Mar 2015



'The MonologueSlam is an inspirational events for actors, audience and judges alike, which fully supports the talent involved and the atmosphere is fantastic!'
AGENT, HOXTON MANAGEMENT

'Monologue Slam was an exciting, energetic night with unbelievable talent on show. It's something that every actor should do, and I was humbled to take part.'

MONOLOGUESLAM PERFORMER

'I can't thank TriForce enough for the platform and the encouragement. It's such an inspiring event and I'm sure it will continue to be!'

MONOLOGUESLAM PERFORMER



Judges have included:

Independent (Agency), Amy Hubbard, Casting Director (The Hobbit)
Daniel Edwards, Casting Director (Mr Selfridge)
Williamson & Holmes (Agency)
Stevenson Withers (Agency)
Global Artists (Agency)
Julia Crampsie, Head of Casting (BBC)

'I've been to MonologueSlam twice and have been amazed by the level of talent I've seen. It's a great evening and a chance to meet new actors. It's led to actors coming to meet with us and even gaining roles in some of our projects. I can't wait to go again.'

CASTING DIRECTOR, SHAHEEN BAIG CASTING



September 2014
SPOILING
 THE SELL-OUT EDINBURGH HIT

Presented by the Traverse
 Theatre in association with
 Theatre Royal Stratford East
 29 Aug - 13 Sept 2014

WRITER JOHN MCCANN
 COMPOSER DANNY KRASS
 DIRECTOR ORLA O'LOUGHLIN
 DESIGNER ANTHONY LAMBLE
 LIGHTING DESIGNER COLIN GRENFELL
 SOUND DESIGNER DANNY KRASS
 ASSISTANT DIRECTOR ANDY MCNAMEE
 CAST GABRIEL QUIGLEY, RICHARD CLEMENTS



'Compelling and well-acted.
 Food for thought on the
 political system.'

AUDIENCE MEMBER

'Very well performed. Topical
 and thought provoking...'

AUDIENCE MEMBER

'Awesome. I thought the
 two actors resonated and
 interacted beautifully.'

AUDIENCE MEMBER

'a sharp and witty political
 satire... The power-play
 between the two strong
 characters is engrossing.'

TV BOMB

'a whirlwind of
 a performance by
 Gabriel Quigley.'

THE HERALD



'Stunning performances in a timely
 play which asks pertinent questions
 about Scottish independence.'

THE STAGE

'Gabriel Quigley's
 magnificent central
 performance... loud,
 complex, unlovely -
 yet completely truthful
 and finally alluring.'

THE SCOTSMAN

'delivered in language worthy of
 'The Thick of It'... a salute to ballsy,
 principled independent women...
 Gabriel Quigley takes on that
 role with might.'

THE EDINBURGH GUIDE

'an absolute winner,
 filled with political
 zingers and a
 contagious kinetic
 energy from start to
 finish... terrific fun.'

ACROSS THE ARTS



'the performances are class and it's
 neatly directed by Orla O'Loughlin.
 McCann uses his own facility with words
 to lay bare the treachery of political
 language and suggest that it's time to
 speak plainly and truthfully at last.'

THE GUARDIAN

★★★★ The Telegraph
 ★★★★★ The Times
 ★★★★★ Arts Desk
 ★★★★★ The Stage
 ★★★★★ The Scotsman
 ★★★★★ The Edinburgh Guide
 ★★★★★ Across the Arts
 ★★★★★ TV Bomb
 ★★★★★ The Herald

October 2014 RHETORICAL

AFROVIBES FESTIVAL RETURNS WITH A
WICKEDLY FUNNY AND SATIRICAL SHOW

Presented by
Theatre Royal Stratford East in
collaboration with Stratford Circus,
at Stratford Circus. Presented by
Space Town Entertainment

14 – 18 Oct 2014

CO-WRITERS MPUMELELO
PAUL GROOTBOOM,
AUBREY SEKHABI
DIRECTOR MPUMELELO
PAUL GROOTBOOM
SET DESIGNER
WILHELM DISBERGEN
CHOREOGRAPHER
THABO RAPOO
LIGHTING DESIGNER
DECLAN RANDALL

COSTUME CO-ORDINATOR
IRENE MATHE
PRESENTED BY SPACE TOWN
ENTERTAINMENT
PRODUCER RENDITIONS
PRODUCTIONS
CAST PRESLEY
CHWENEYAGAE, PULANI
JANTJES, MELISSA
MATSHIKIZA, ONTIRETSE
MANYETSA, SELLO ZIKALALA



'Rhetorical is a very relevant play because it speaks about our history in South Africa, the different flaws about our nation, and inner political clashes of the ANC. I think people will find the show interesting and entertaining – they will get to see a glimpse of South African history but most of the play's themes are universal, so audiences will be able to relate to the story.'

PRESLEY CHWENEYAGAE ON 'RHETORICAL'

'It was brilliant, really superb acting!'

AUDIENCE MEMBER

'... based on the speeches of Thabo Mbeki, deputy to Nelson Mandela... and his successor as head of state. ... this company performs with an intensity that demonstrates their commitment to this warts and all presentation of a figure overshadowed by his noble predecessor.'

BRITISH THEATRE GUIDE



'I loved getting a window on a world and a story I don't know much about.'

AUDIENCE MEMBER

'I thought the production was excellent and I liked the dancing especially.'

AUDIENCE MEMBER

'In a nutshell, I would say that Rhetorical is an engaging, humorous, fresh, black South African view of itself and the world. The thing about this play is that it is largely experimental, and the Brits know less about Mbeki than they do about Mandela, so I think it'll certainly be of interest. They might not get every reference in the play, but let's see!'

MPUMELELO PAUL GROOTBOOM ON 'RHETORICAL'

October 2014 JOAN LITTLEWOOD CENTENARY

A whole year of events to
celebrate the mother of
Modern Theatre
(6 Oct 1914 – 6 Oct 2014)

IN PRINT

'REMEMBERING JOAN LITTLEWOOD'

Platform at National Theatre with
Peter Rankin, Murray Melvin
and Stella Duffy, chaired by Sue
MacGregor. Followed by book-signing
of 'Joan Littlewood: Dreams and
Realities', the official biography
by Peter Rankin. 30 Sep 2014

'the most galvanising director
in mid-20th century Britain.'
PETER BROOK

'one of two undoubted geniuses
of the post-war British theatre,
the other being Peter Brook.'
SIR PETER HALL

'Joan Littlewood brought theatre to the
people of east London and revolutionised
the international theatre landscape with
her bold and powerful productions.
She was an inspiration to many and
it's important that we recognise the
significance of her work...'

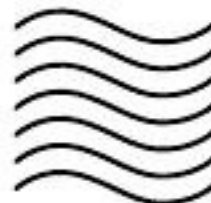
KERRY MICHAEL,
ARTISTIC DIRECTOR,
THEATRE ROYAL STRATFORD EAST



ON FIRST-CLASS POST

Royal Mail First-class
stamp and special postmark.
March and 6-11 Oct 2014

Celebrating the life of
Joan Littlewood
Remarkable Lives Stamps
1914-2002



Joan Littlewood featured on Royal
Mail's 'Remarkable Lives' stamps
set issued in March, honouring
individuals who have made a
significant contribution to UK life.

Royal Mail issued a special postmark
to commemorate the centenary of the
birth of Joan Littlewood - the postmark
appeared on mail delivered nationwide
from Mon 6 Oct (the date she was born)
to Sat 11 Oct 2014.



ON THE SOUTH BANK

'WE LOVE JOAN'

Jude Kelly in discussion with
Murray Melvin, Erica Whyman,
Paulette Randall and Caroline Bird
at South Bank Centre. 4 Oct 2014

'Joan Littlewood is the reason why
London is still one of the most
famous cities in the world for
theatre. Along with the architect
Cedric Price, who she developed
the idea of the Fun Palace with,
she has inspired me as both a
theatre director and a creative
artistic director. We have a lot to
thank her for, I do particularly. She
was an incredible woman - full of
determination and commitment
and great theatre artistry, and it's
extremely apt that we are creating
a Fun Palace at Southbank Centre,
one of Joan's key inspirations,
this weekend.'

JUDE KELLY, SOUTHBANK
CENTRE'S ARTISTIC DIRECTOR

ON THE UNDERGROUND

'The Palace That Joan Built' by
Mel Brimfield and Gwyneth Herbert
Art on the Underground
commission and performance at
Stratford Station.
4 Oct 2014

'This was totally amazing. We
transformed a dull concourse in to
an Artists arena that allowed the
station to 'dance' in a way never seen
before. Seeing the smiles across the
gathered customers was a pure joy.'

SIMON GROVE (POSTED ON ART
ON THE UNDERGROUND WEBSITE)

'Wow! Wow! Wow! Knocked out by it
all... A joy to see the people's faces
as they came off of the trains and
stopped to be entertained... I have
paid a lot of money and not had the
kind of experience I had on Saturday.
Fun exciting, exhilarating... Makes
you feel good to be alive doesn't it?'

BERYL RICHES (POSTED ON ART
ON THE UNDERGROUND WEBSITE)

ON RADIO AND TV

'Archive on 4: Joan Littlewood and the
People's Theatre' Sir Richard Eyre pays
tribute (BBC Radio 4, 27 Sep 14).

'Sunday Feature: The Gospel According
to Joan' Joan remembered by those who
knew her (BBC Radio 3, 26 Oct 14).

'The Mother of Modern Theatre'

hosted by Catherine Tate (BBC Radio 2,
10 Nov 14)

'Oh What a Lovely War' Recorded at Theatre
Royal Stratford East (BBC Radio 2, 14 Nov 14).

'Artsnight' Maxine Peak on revolutionary
voices (BBC TV, 6 Mar 15).

ACROSS THE UK

FUN PALACES

138 Fun Palaces across the UK and beyond
to mark Joan's Centenary - free and fun!
4 & 5 OCT 2014.

'Choose what you want to do... dance, talk or be
lifted up to where you can see how other people
make things work. Sit out over space with a drink
and tune in to what's happening elsewhere in the
city. Try starting a riot or beginning a painting -
or just lie back and stare at the sky.'

JOAN LITTLEWOOD AND CEDRIC PRICE
(ON THEIR VISION FOR THE FUN PALACE)

'Fun Palaces is more than just a celebration of an
extraordinary individual. It's a national campaign
that shouts, sings, shimmies, stomps from the
rooftops: arts and culture are a crucial part of
human life, and they are truly, truly glorious.
Let's make sure they belong to everyone.'

STELLA DUFFY, FUN PALACES' CO-DIRECTOR

'We believe in the genius in everyone, that
everyone is an artist and everyone a scientist,
and that arts and sciences can change the world
for the better. We believe we can do this together,
locally, with radical fun - and that anyone,
anywhere, can make a Fun Palace.'

THE FUN PALACES MANIFESTO
(WWW.FUNPALACES.CO.UK)

'Yesterday was a very silly day. I wore a cape in
public, had a sing off... which I know my side
won, walked around with a balloon on my head,
told a story and received a cake as an award,
talked about changing the world and plenty
more silly things. I think we should do this
fun palace thing every month...'

ANGELA FROST (ON THEATRE ROYAL
STRATFORD EAST'S FUN PALACE)



November 2014

THE INFIDEL-THE MUSICAL

EDGY NEW MUSICAL ABOUT RACE, PREJUDICE, CONFUSION
AND WHAT IT REALLY MEANS TO BE YOURSELF

Presented by
Theatre Royal Stratford East
and Arvind Ethan David
3 Oct - 14 Nov 2014

WRITER, BOOK AND LYRICS
DAVID BADDIEL
COMPOSER

ERRAN BARON COHEN
ADDITIONAL MATERIAL
ARVIND ETHAN DAVID
CO-DIRECTOR KERRY MICHAEL
CO-DIRECTOR DAVID BADDIEL
SET & COSTUME DESIGNER
NICK BARNES
CHOREOGRAPHER LIAM STEEL
MUSICAL SUPERVISOR
MIKE DIXON
MUSICAL DIRECTOR MATT SMITH

LIGHTING DESIGNER
PHIL GLADWELL
SOUND DESIGNER ED CLARKE
PROJECTION DESIGNER
DICK STRAKER
ASSISTANT DIRECTOR POOJA GHAI
CASTING DIRECTOR ANN VOSSER
CAST ALEXANDER ANDREOU,
ANDREW PAUL, GARY WOOD, KEV
ORKIAN, MELANIE MARSHALL,
MELANIE MASSON, MINA ANWAR,
SIOBHAN ATHWAL, STEVEN SERLIN
BAND DAVE ITAL, LINDA PINELLI,
RYAN MARTIN

Photo Credit: Robert Day

'One would
have to have a
humour bypass
not to laugh.'
EVENING STANDARD

'Great story, very
funny and up-lifting.
Superior production.'
AUDIENCE MEMBER

'It was very, very funny.'
AUDIENCE MEMBER

'So good I saw it twice
in two weeks. Best
show I've ever seen.'
AUDIENCE MEMBER



'Witty, cheeky,
hilarious... A MUST
SEE SHOW.'
PUBLIC REVIEWS

'The Infidel, a brilliantly clever
play, was brilliantly interpreted
by Jacqui Beckford, my wonderful
BSL interpreter...'
HERBERT KLEIN



'A FEEL-GOOD
CRACKER. You'd
have to be cynical to
leave with anything
less than a big grin.'
THE INDEPENDENT

'Genuinely first-class, risqué,
laugh-a-minute theatre at its best.'
DIGITAL SPY

'This is the sort of show only
Stratford East can do and it's
what they've always done. It's
in the spirit of Joan Littlewood
- populist, irreverent, a little
bit shocking with an important
message.' TWITTER



★★★★ The Sunday Express
★★★★ The Observer
★★★★ The Jewish Chronicle
★★★★ Public Reviews



December 2014 BEAUTY AND THE BEAST

Presented by
Theatre Royal Stratford East
29 Nov 2014 – 17 Jan 2015

WRITER, BOOK AND LYRICS
PAUL SIRETT
WRITERS, MUSIC/LYRICS
WAYNE NUNES, PERRY MELIUS
DIRECTOR DAWN REID
MUSICAL DIRECTOR
IAN MACGREGOR
STAGE & COSTUME DESIGNER
JENNY TIRAMANI
SET & COSTUME DESIGNER
HATTIE BARSBY
LIGHTING DESIGNER DAVID PLATER
CHOREOGRAPHER
NATASHA KHAMJANI, SOUND
DESIGNER, ED CLARKE

ASSISTANT DIRECTOR
MADELINE KLUDJE
MAGIC CONSULTANT
SCOTT PENROSE
CAST ALLYSON AVA-BROWN,
AMELIA CAVALLI, ANTONIA KEMI
COKER, HELEN ALUKO, JORELL
COIFFIC-KAMALL, LAURENCE
ALDRIDGE, MICHAEL BERTENSHAW,
MINAL PATEL, RALPH BOGARD,
VLACH ASHTON
SUPERNUMERARIES CHARLOTTE
LAW, PARIS IRIS CAMPBELL
BAND IAN MACGREGOR,
PERRY MELIUS, WAYNE NUNES

Sponsored by

telfordhomes

'Our whole party of
14 thoroughly enjoyed
it and we liked the
alternative take on the
character of the beast...'
AUDIENCE MEMBER

'I loved it...brilliant
for children of all
ages and adults too.'
AUDIENCE MEMBER

'The magic
of Christmas
at its best.'
LONDON THEATRE

'An inventive adaptation
with a great original score.'
THE STAGE



'full of fun and invention...
a riotous musical pageant.'
THE TELEGRAPH

'a romantic magical musical
whirlwind. I loved it.'
AFRIDIZIAK

'this classic story
is one to watch this
Christmastime,
oh yes it is.'
WHATSONSTAGE.COM



'Paul Sirett's quirky,
clever version of the
much-loved classic
is fantastic.'
THE WHARF

'Stratford East's annual panto
feast is as delicious as ever.'
A YOUNGER THEATRE



'The Theatre Royal team
has done it again! Bravo!'
BRITISH THEATRE GUIDE

'I'm in my fifties and have seen dozens
of pantomimes over the years and this
was easily the best. My 11 – and 16 –
year old children loved it too. The panto
is quirky, pacy, very funny and has lots
of modern touches...' TIME OUT

★★★★★ London Theatre
★★★★★ Afridiziak
★★★★ The Telegraph
★★★★ Whatsonstage.com
★★★★ The Wharf

January 2015 AN EVENING WITH STRATFORD EAST SINGERS

OUR VERY OWN COMMUNITY CHOIR
TAKES THE MAIN STAGE.

Presented by
Theatre Royal Stratford East
14 Jan 2015

CREATIVE DIRECTOR
BYRON GOLD



An Evening with
Stratford East Singers
Sponsored by

**GET
LIVING
LONDON**

at east village E20

'Stratford East Singers - the official singing group of Theatre Royal Stratford East - have had a fantastic and busy year. In April, they performed some of their amazing repertoire at the opening of Queen Elizabeth Olympic Park and were part of the *Southbank Choir Festival* on the same day (!); they were invited to support Fleur East and Ben Haenow on *The X-Factor* in November, and they produced and performed in their own concert, *An Evening with Stratford East Singers*, on our main stage in January.



The *Stratford East Singers* have regularly performed at Theatre Royal Stratford East's *Annual Briefings* and were also invited to perform at East London Dance's production of *The River*, held over a weekend at Canary Wharf (also part of the *Big Dance Week*). As well as all this, they also gave up their time to take part in a local *charity event* that was raising money for the completion of a Health Centre in Tanzania.

Stratford East Singers are made up of all ages and abilities. Led by recording artist Byron Gold, the group meets every Wednesday 7pm - 9.30pm at Theatre Royal Stratford East. If you know anyone who would like to join, please do pass on our email address: ses@stratfordeast.com.

A big thank you to *Byron Gold*, our Creative Director for the Choir, all the Singers for their continued commitment, to our Project Assistants *Abena Adofo* and *Wenona Ellie* and to everyone at the Theatre for their continued support.'

Dawn Reid, Deputy Artistic Director,
Theatre Royal Stratford East

'It is not how we sing that is the primary concentration, it is WHY we sing!'
BYRON GOLD, CREATIVE DIRECTOR



WRITER/DEVISERS JOAN LITTLEWOOD'S MUSICAL ENTERTAINMENT OH WHAT A LOVELY WAR BY THEATRE WORKSHOP CHARLES CHILTON, GERRY RAFFLES AND MEMBERS OF THE ORIGINAL CAST. TITLE SUGGESTED BY TED ALLEN

MILITARY ADVISER RAYMOND FLETCHER

DIRECTOR TERRY JOHNSON

DESIGNER LES BROTHERSTON

ORCHESTRATIONS AND MUSICAL SUPERVISION MIKE DIXON

MUSICAL DIRECTOR PETER WHITE

CHOREOGRAPHER LYNNE PAGE

LIGHTING DESIGNER PAUL PYANT

SOUND DESIGNER MIKE WALKER

VIDEO DESIGNER IAN WILLIAM GALLOWAY

CASTING DIRECTOR JIM ARNOLD

CDG FOR PIPPA ALLON CASTING SOPHIE LARSMAN

ASSOCIATE CHOREOGRAPHER KELLY EWINS-PROWSE

ASSOCIATE VIDEO DESIGNER LEO FLINT, BELLA RIZA

CAST ALICE BAILEY JOHNSON, MARCUS ELLARD, ALEX GIANNINI, RICHARD GLAVES, LAUREN HOOD, MATTHEW MALHOUSE, WILLIAM OXBORROW, WENDI PETERS, MARK PRENDERGAST, IAN REDDINGTON, CHRISTOPHER VILLIERS, BLEU WOODWARD

SWINGS EMMA CROSSLEY, DAN REILLY, NEIL STEWART

BAND PETER WHITE, GRAHAM JUSTIN, RYAN MARTIN, SARAH BOWLER, HARRIET SCOTT

February 2015

OH WHAT A LOVELY WAR

JOAN LITTLEWOOD'S ICONIC MUSICAL RETURNS HOME PRIOR TO NATIONAL TOUR

Judy Lloyd and Matthew Mitchell in association with David Mirvish & Mark and Cheryl Norman present the Theatre Royal Stratford East Production

29 Jan - 7 Feb 2015



'Johnson's production has heart and soul and rightly restores a classic for a new generation.'

THE GUARDIAN

'A classic for a new generation.'

GUARDIAN



'Arguably the greatest achievement of Joan Littlewood's Stratford East-based Theatre Workshop... 'Oh What a Lovely War' amuses, inspires, entertains and enflames.'

MUSICAL THEATRE REVIEW



OH WHAT A LOVELY WAR NATIONAL TOUR:

RICHMOND THEATRE 10 - 14 FEBRUARY 2015
MALVERN THEATRES 16 - 21 FEBRUARY 2015
OPERA HOUSE MANCHESTER 24 - 28 FEBRUARY 2015
CAMBRIDGE ARTS THEATRE 2 - 7 MARCH 2015
THEATRE ROYAL BATH 9 - 14 MARCH 2015
PRINCESS THEATRE, TORQUAY 17 - 21 MARCH 2015
YVONNE ARNAUD THEATRE, GUILDFORD 23 - 28 MARCH 2015
BELGRADE THEATRE, COVENTRY 30 MARCH - 4 APRIL 2015
THEATRE ROYAL BRIGHTON 7 - 11 APRIL 2015
LEICESTER CURVE 13 - 18 APRIL 2015
AYLESBURY WATERSIDE THEATRE 28 APRIL - 2 MAY 2015
BIRMINGHAM REP THEATRE 5 - 9 MAY 2015

★★★★★ Daily Telegraph
★★★★★ The Times
★★★★★ Evening Standard
★★★★★ Financial Times
★★★★★ Whatsonstage.com
★★★★★ The Guardian
★★★★★ Musical Theatre Review

Photo Credit: Robert Day

March 2015 ANTIGONE

THRILLING URBAN AND
CONTEMPORARY VERSION
OF SOPHOCLES' ACCLAIMED
GREEK CLASSIC

Presented by Pilot Theatre,
Derby Theatre and
Theatre Royal Stratford East
19 Feb - 14 Mar 2015

WRITER ROY WILLIAMS
ORIGINAL MUSIC SANDY NUTTGENS
DIRECTOR MARCUS ROMER
DESIGNER JOANNA SCOTCHER
LIGHTING DESIGNER ALEXANDRA STAFFORD
SOUND DESIGNER SANDY NUTTGENS
ASSOCIATE DIRECTOR TOM BELLERBY
CAST DOREEN BLACKSTOCK, FRIEDA THIEL,
GAMBA COLE, LLOYD THOMAS, LUKE JAMES,
MARK MONERO, OLIVER WILSON, SAVANNAH
GORDON-LIBURD, SEAN SAGAR



'A powerful synthesis
between a great,
ancient work and a very
contemporary problem.'

FINANCIAL TIMES

'Thrilling... direct, of
the street, dangerous
at times poetic.'

THE BIG ISSUE

'Really impressed... the
performance captured the
sense of the original whilst
making it meaningful for
a modern audience.'

AUDIENCE MEMBER

'Funny, gritty and moving.
An excellent modern twist
on a Greek classic.'

AUDIENCE MEMBER

'Fantastic - great acting
from a stellar cast!'

AUDIENCE MEMBER



'Mark Monero is absolutely
exceptional.'

THE INDEPENDENT

'Fast, racy... the play lives,
disturbs and moves audiences.'

WHATSONSTAGE

'An epic Greek
tragedy given an
accessible urban
treatment that
loses none of its
original power.'

THE STAGE

'This is the theatre that should
be being made - telling important,
timeless stories in new ways,
to appeal to new audiences,
but also helping old audiences
discover something different
in a two thousand year old
story, on a Tuesday night in a
beautiful theatre in Stratford.'

THEATREFULLSTOP



'A great cast keep up the pace and humour,
especially Mark Monero as a cockerel-like
Creo and Gamba Cole as his wretched
son, fiercely in love with Savannah Gordon-
Liburd's fine Antigone. Doreene Blackstock
is excellent as Creo's wife Eunice.'

TIME OUT

★★★★★ The Big Issue
★★★★★ Theatrefullstop
★★★★ The Stage
★★★★ Whatsonstage
★★★★ The Independent

PEOPLE MAKING IT HAPPEN

ACTORS

Alex Giannini
(‘Oh What a Lovely War’)
Alexander Andrea (The Infidel)
Alice Bailey Johnson
(‘Oh What a Lovely War’)
Allyson Ava-Brown
(Beauty and the Beast)
Amelia Cavallo
(Beauty and the Beast)
Andrew Paul (The Infidel)
Antonia Kemi Coker
(Beauty and the Beast)
Ashley Chia (Kingston 14)
Elen Woodward
(‘Oh What a Lovely War’)
Brian Boveil (Kingston 14)
Carla Harrison Hodge
(Angelic Tales: ‘Sweatin’it Out’)
Caroline Parker (Angelic Tales:
Acceptable Damage’)
Charles Venn (Kingston 14)
Charlotte Law (Supernumerary,
Beauty and the Beast)
Christopher Ryan
(Finger Aint Wot They Used T’Be’)
Christopher Villiers
(‘Oh What a Lovely War’)
Dan Reilly
(Swing, ‘Oh What a Lovely War’)
Daniel York
(Angelic Tales: Jamaica Boy’)
Derek Elroy (Kingston 14)
Doreen Blackstock (Antigone’)
Elinor Machen-Fortune
(Angelic Tales: Acceptable Damage’)
Emma Crossley
(Swing, ‘Oh What a Lovely War’)
Franklin Nwankolo
(Supernumerary, Kingston 14)
Frieda Thiel (Antigone’)
Gabriel Quigley (‘Spoiling’)
Richard Clements (‘Spoiling’)
Gamba Cole
(Antigone’, Kingston 14)
Gary Kemp
(Finger Aint Wot They Used T’Be’)
Gary Watson
(Finger Aint Wot They Used T’Be’)
Gary Wood (The Infidel)
Gavin McCluskey
(Angelic Tales: Acceptable Damage’)
Goldie (Kingston 14)
Harriet Catchpole
(Angelic Tales: Wild Nights!’)
Wild Nights!’)
Helen Aluko (Beauty and the Beast)
Ian Reddington
(‘Oh What a Lovely War’)
Jed Forrest
(Angelic Tales: Wild Nights!’)
Wild Nights!’)
Jessie Wallace
(Finger Aint Wot They Used T’Be’)
Jo Castleton
(Angelic Tales: Wild Nights!’)
Wild Nights!’)

Joanna Woodward
(Finger Aint Wot They Used T’Be’)
John Olohan
(Finger Aint Wot They Used T’Be’)
John Omole
(Angelic Tales: Jamaica Boy’)
Jorell Coiffie-Kamall
(Beauty and the Beast)
Kemi Lofinakin
(Angelic Tales: ‘Sunday’)
Kev Orkian (The Infidel)
Lauren Hood
(‘Oh What a Lovely War’)
Lawrence Aldridge
(Beauty and the Beast)
Lloyd Thomas (Antigone’)
Lorna Gayle
(Angelic Tales: ‘Sunday’)
Luke James (Antigone’)
Lynette Linton
(Angelic Tales: Acceptable Damage’)
Marons Ellard
(‘Oh What a Lovely War’)
Marons Griffiths
(Angelic Tales: Jamaica Boy’)
Mark Arden
(Finger Aint Wot They Used T’Be’)
Mark Mouero (Antigone’)
Mark Prendergast
(‘Oh What a Lovely War’)
Matthew Malthouse
(‘Oh What a Lovely War’)
Melanie Marshall (The Infidel’)
Melanie Masson (The Infidel’)
Michael Bertenshaw
(Beauty and the Beast)
Mina Anwar (The Infidel’)
Minal Patel
(Beauty and the Beast)
Mojisola Adebayo
(Angelic Tales: ‘Sunday’)
Natalia Hinds
(Angelic Tales: Jamaica Boy’)
Nathan Bryon
(Angelic Tales: Acceptable Damage’)
Neil Stewart
(Swing, ‘Oh What a Lovely War’)
Nick Korsu
(Angelic Tales: ‘Sweatin’it Out’)
Nicola Taylor (Angelic Tales:
‘Sunday’)
Oliver Wilson (Antigone’)
Oscar Porter Brentford
(Angelic Tales: Wild Nights!’)
Wild Nights!’)
Paris Iris Campbell
(Supernumerary,
Beauty and the Beast)
Paris Robin
(Angelic Tales: ‘Sweatin’it Out’)
Presley Chweneyagae (Rhetorical’)
Palani Jantjeis (Rhetorical’)
Melissa Matsikiza (Rhetorical’)
Oatiretse Manyetsa (Rhetorical’)
Sello Zikalala (Rhetorical’)
Ralph Bogard
(Beauty and the Beast)
Reena Lalbihari
(Angelic Tales: Wild Nights!’)
Wild Nights!’)

Richard Graves
(‘Oh What a Lovely War’)
Ruth Alfie Adams
(Finger Aint Wot They Used T’Be’)
Ryan Molloy
(Finger Aint Wot They Used T’Be’)
Sarah Middleton
(Finger Aint Wot They Used T’Be’)
Savannah Gordon-Libard (Antigone’)
Sean Sagar (Antigone’)
Siobhan Athwal (The Infidel’)
Stanley Eldridge
(Angelic Tales: Wild Nights!’)
Wild Nights!’)
Stefan Booth
(Finger Aint Wot They Used T’Be’)
Stephen Hoo
(Angelic Tales: Jamaica Boy’)
Steven Serlin (The Infidel’)
Stevie Hutchinson
(Finger Aint Wot They Used T’Be’)
Suzie Chard
(Finger Aint Wot They Used T’Be’)
Tom Ross-Williams
(Angelic Tales: ‘Sweatin’it Out’)
Toyin Alase
(Angelic Tales: ‘Sunday’)
Trevor Laird (Kingston 14)
Tyson Oba (Kingston 14)
Vivian Carter
(Finger Aint Wot They Used T’Be’)
Vlach Ashton
(Beauty and the Beast)
Wendi Peters
(‘Oh What a Lovely War’)
Will Barton
(Finger Aint Wot They Used T’Be’)
William Oxborough
(‘Oh What a Lovely War’)
Yvonne Gidden
(Angelic Tales: Jamaica Boy’)

ARTISTIC ASSOCIATES

Fred Carl (US)
John Gordon (Team Angelica)
Matthew Xia
Rikki Beadle-Blair (Team Angelica)
Robert Lee (US)
ULT2

BAR PERFORMERS

Alan Weeker
Allyson Ava Brown
Andy Mitchell
Bert of Newham
Byron Gold
Claire Woods
Clarity Vocals
Darren Hart/Hartman’s House
Deborah Carew
DJ Funky Dee
DJ Gilly
DJ Hughie
DJ Joe Grimes
DJ Lok
DJ Sparky B
DJ T-Spark
Ecta B Daley
Gemma Salter
Kat Francoir/Word4word
Lauren Dalrymple
Lex Cameron Trio
Limelight Sessions

Michelle Augurtin Trio
Mighty Duker
Mister J
Red Carpet
Riverrhaw
Sheryl Mehmet
Tina T & Simply Smooth
Wayne & Perry
Wayne Hernandez
Will Morgan

BAR PRODUCERS

Abena Adofe
Clarity Vocals
Darren Hart
Kat Francoir
Sharleen Fulgence

BOARD OF DIRECTORS

Andrew Cowan
Carol Lake (Chair)
Clare Evans
Derek Joseph
Hazel Province
Jane Storie
Jo Melville
Lady Stratford
Mark Pritchard
Michael E boda
Paul O’Leary (Vice Chair)
Sabine Vinck

CASTING

Ann Voecker (The Infidel’)
Jim Arnold CDG for Pippa Allion
Casting (‘Oh What a Lovely War’)

CHOREOGRAPHERS

Kelly Ewins-Prowse
(Associate Choreographer,
‘Oh What a Lovely War’)
Liam Steel (The Infidel’)
Lynne Page
(‘Oh What a Lovely War’)
Natasha Khamjani
(Beauty and the Beast)
Nathan M Wright
(Finger Aint Wot They Used T’Be’)
Thabo Rapoo (Rhetorical’)

COMPOSERS/LYRICISTS

Danny Krass (Composer, ‘Spoiling’)
David Baddiel (Lyrics, The Infidel’)
Erran Baron Cohen
(Composer, The Infidel’)
Lionel Bart
(Music and Lyrics,
Finger Aint Wot They Used T’Be’)
Perry Melias
(Music/Lyrics,
Beauty and the Beast’)
Sandy Nuttgens
(Original Music, Antigone’)
Wayne Nanes (Music/Lyrics,
Beauty and the Beast’)

DESIGNERS

Alexandra Stafford
(Lighting Designer, Antigone’)
Anthony Lamble
(Designer, ‘Spoiling’)
Colin Grenfell
(Lighting Designer, ‘Spoiling’)

Danny Krass
(Sound Designer, ‘Spoiling’)
Bella Riza
(Associate Video Designer,
‘Oh What a Lovely War’)
Ben Ormerod
(Lighting Designer,
Finger Aint Wot They Used T’Be’)
Bill Dudley
(Set Designer,
Finger Aint Wot They Used T’Be’)
David Plater
(Lighting Designer,
Beauty and the Beast’)
Declan Randall
(Lighting Designer, Rhetorical’)
Dick Straker
(Projection Designer, The Infidel’)
Ed Clarke (Sound Designer,
Beauty and the Beast’)
Ed Clarke
(Sound Designer, The Infidel’)
Gareth Owen
(Sound Designer,
Finger Aint Wot They Used T’Be’)
Hattie Barsby
(Set & Costume Designer,
Beauty and the Beast’)
Ian William Galloway
(Video Designer,
‘Oh What a Lovely War’)
Irene Mathe
(Costume Co-ordinator, Rhetorical’)
Jenny Tiramani
(Stage & Costume Designer,
Beauty and the Beast’)
Jo Joelson
(Lighting Designer, Kingston 14’)
Joanna Scotcher
(Designer, Antigone’)
Leo Fiat
(Associate Video Designer,
‘Oh What a Lovely War’)
Les Brotherston
(Designer, ‘Oh What a Lovely War’)
Mike Walker
(Sound Designer,
‘Oh What a Lovely War’)
Nick Barnes
(Set & Costume Designer,
The Infidel’)
Paul Pyant
(Lighting Designer,
‘Oh What a Lovely War’)
Phil Gladwell
(Lighting Designer, The Infidel’)
Richard Hammarston
(Sound Designer,
Kingston 14’)
Sadeysa Greenaway-Bailey
(Associate Designer, Kingston 14’)
Sandy Nuttgens
(Sound Designer, Antigone’)
ULT2
(Stage & Costume Designer,
Kingston 14’)
Wilhelm Disbergen
(Set Designer, Rhetorical’)

DIRECTORS

Adam Leeson
(Associate Director,
Finger Aint Wot They Used T’Be’)
Andy McNamee
(Associate Director,
‘Spoiling’)
Clint Dyer
(Director, Kingston 14’)
David Baddiel
(Co-Director, The Infidel’)

Dawn Reid
(Director, Angelic Tales:
‘Sunday’, Beauty and the Beast’)
Kerry Michael
(Co-Director, The Infidel’)
Madeleine Kludje
(Assistant Director,
Beauty and the Beast’)
Marcus Romer
(Director, Antigone’)
Mpamelelo Paul Grootboom
(Director, Rhetorical’)
Orla O’Loughlin
(Director, ‘Spoiling’)
Pooja Ghai
(Assistant Director, The Infidel’)
Rikki Beadle-Blair
(Director, Angelic Tales:
Wild Nights!’ Wild Nights!’,
Acceptable Damage’,
‘Sweatin’it Out’, Jamaica Boy’)
Sophie Larsson
(Associate Director,
‘Oh What a Lovely War’)
Stephen Macaulay
(Assistant Director, Kingston 14’)
Terry Johnson
(Director, Finger Aint Wot They
Used T’Be’, ‘Oh What a Lovely War’)
Tom Bellerby
(Associate Director, Antigone’)

FIGHT DIRECTOR

Alison de Barga (Kingston 14’)

INTERNATIONAL CONNECTIONS

Festival Internacional de Cemar em
Caca, Brazil
Tisch School, New York

MAGIC CONSULTANT

Scott Penrose (Beauty and the
Beast’)

MUSICAL DIRECTORS

Barney Ashworth
(Associate Musical Director,
‘Oh What a Lovely War’)
Byron Gold
(Stratford East Singers)
Elliot Davis (Musical Director/
Script Adaptation/Arrangements,
Finger Aint Wot They Used T’Be’)
Ian MacGregor
(Musical Director,
Beauty and the Beast’)
Joe Louis Robinson
(Assistant Musical Director,
Finger Aint Wot They Used T’Be’)
Matt Smith
(Musical Director, The Infidel’)
Mike Dixon
(Musical Supervisor, The Infidel’)
Mike Dixon
(Orchestrations and Musical
Supervision, ‘Oh What a Lovely War’)
Peter White
(Musical Director,
‘Oh What a Lovely War’)

MUSICIANS

Bryan Smith
(Finger Aint Wot They Used T’Be’)
Dave Ital (The Infidel’)
Graham Justin
(‘Oh What a Lovely War’)
Harriet Scott
(‘Oh What a Lovely War’)
Ian MacGregor
(Beauty and the Beast’)

Jake Newman
(Finger Aint Wot They Used T’Be’)
Joe Louis Robinson
(Finger Aint Wot They Used T’Be’)
Linda Pinelli (The Infidel’)
Perry Melias
(Beauty and the Beast’)
Peter White
(‘Oh What a Lovely War’)
Ryan Martin
(The Infidel’)
Sarah Bowler
(‘Oh What a Lovely War’)
Tom Clare
(Finger Aint Wot They Used T’Be’)
Wayne Nanes
(Beauty and the Beast’)

PARTNERS

Art on the Underground
Arts Council England
Arvind E than David
Audience London
Barbican
Birkbeck, University of London
Create
Derby Theatre
Elliot Davis, Paul Tyler & Jamie
Clark and Rose Povey
Fun Palace
Garrick Club
Judy Lloyd and Matthew Mitchell,
David Mirvich & Mark and Cheryl
Norman
Ken Hill Trust
London Borough of Newham
Lyric Hammersmith
National Theatre of Scotland
Newham Chamber of Commerce
Pachamama Productions
Pilot Theatre
Playful Productions
Reading University
Space Town Entertainment
Stratford Circus
Stratford Renaissance Partnership
Stratford Rising
Team Angelica
Traverse Theatre
Triforce Promotions
Zupakat Productions

Photographers
Jane Hobson
John Hyam
Johnny Munday
Hobby Clark
Robert Day
Sharon Wallace

PROFESSIONAL ADVISORS

Kingston Smith
(Auditors)
Linda Potter at Wrightsure
Services Ltd
Maria Maltby at Wilkins
Kennedy LLP
Neil Adleman at Harbottle
& Lewis LLP

SIGN LANGUAGE INTERPRETERS

Ali Pottinger
Sula Gleeson
Vikki Gee Dare

STAFF

Aaron Dinnall Front of House
Aaron James Bar Staff
Adam Lloyd Bar Staff

Alexander Livermore-Marshall
Front of House
Ali Fellows General Manager
Alison Pottinger
Deputy Stage Manager
Altan Reymann
Deputy Stage Manager
Amaryllis Courtney
Box Office Assistant
Amber O’Brien Front of House
Amy Bridges Front of House
Ana Giselda Burke
Box Office Assistant
Andrew Gene Front of House
Andrew Gene Front of House
Angela Frost Box Office Manager
Anushka Tay Wardrobe Manager
Asha Bharti Box Office Assistant
Asma Hassain
Development Manager
Bérenère Ariando De Castelli
Box Office Assistant
Beryl Warner
Box Office Supervisor
Bridget Dube Front of House
Carolina Artegiani
Development Administrator
Caroline Wilson Front of House
Charles Leanson Front of House
Charlotte Mayhew
Follow-spot Operator
Chris Murray Deputy Head of
Electricity, Senior Technician(sound)
Chris Musgrave
Production Manager
Christine Mafando Front of House
CJ Mitchell
Deputy Stage Manager
Cleo Maynard
Assistant Stage Manager
Corinne Linton Front of House
Darren Spencer
Building Maintenance Technician
Dawn Reid
Deputy Artistic Director
Declan Pollock
(Interim) Head of Finance
Ed Parry Costume Supervisor
Edoardo Mulato
Bar Staff, Kitchen Staff
Ehaer Jones
Finance Officer
(maternity leave)
Elizabeth Acqua
Domestic Assistant
Emily Samways Front of House
Emmanuel Alkwaso Front of House
Eyesha Mingo Box Office Assistant
Fabian Spencer
Front of House Manager
Felix Russell
Press and Marketing Manager
Genevieve Smithson
Front of House
Glen Edwards
Bar Staff, Kitchen Staff
Grace Hall Front of House
Graeme Bright, MBII
Building and Facilities
Manager/DPS
Haarns Shah Front of House
Hannah Pharoah Bar Staff
Hassan Efoloko Bar Staff
Heather Walker Front of House
Holly Cooper Front of House
Holly Mallett Bar Staff
Holly Ows Wardrobe Manager
Itoya Osagiede Front of House
Juliana Toma
Bar Staff, Domestic Assistant

Jake Orr Freelance Digital Communications Officer
 Jamal Norman (maternity cover for Juliana Toma)
 Domestic Assistant
 Jan Sharkey-Dodds
 Head of Young People's Work
 Jen Dawey Deputy Stage Manager
 Jenna Theodore
 Community Arts Apprentice
 Jess Glaisher
 Lighting Programmer/Op
 Jessica Carroll Front of House
 Jordana Phillips Front of House
 Julie Lee Box Office Assistant
 Karen Fisher Associate Producer
 Karen Taylor Bar Staff
 Carlos Coleman Project Manager
 Katie Aldous
 Wardrobe Manager, Dresser
 Kemisha Plummer
 Box Office Assistant
 Kerry Michael Artistic Director
 Krystal Pope Front of House
 Kyle MacPherson Head of Electric
 Lara Perez Uriza Bar Staff
 Laure Liarson Bar Staff
 Laurie Ann Anderson Bar Staff
 Leanda Linton
 Bar and Front of House Manager
 Lee Henderson General Manager
 Leeanne Francis Front of House
 Leighton Lewis
 Bar and Catering Manager
 Lenox Kamaba Front of House
 Leonard Headlam
 Bar Staff, Kitchen Staff
 Liyah Summers Front of House
 Lizzie Chapman Stage Manager
 Lois-Ann Messiah Kitchen Staff
 Luke Derbyshire Front of House
 Luke Elmes Bar Staff
 Luke Simpson Bar Staff
 Lynsey Murdoch
 Digital Officer and Admin Assistant
 (Oh What A Lovely War National Schools' Programme)
 Manjit Kaur Babbra
 Domestic Assistant
 Marcin Zawistowski Bar Supervisor
 Marie Costa
 Prop Buyer, Stage Manager
 Marius Renning
 Production Manager
 Marjorie Walcott Domestic Assistant
 Marta Noguera-Cuevas
 Front of House
 Mary Caws Executive Director
 Mary Ling Assistant Archivist
 Matt Fletcher
 Community Arts Apprentice
 Matt Fletcher Technical Apprentice
 Maya Crite-jones Front of House
 Michael Salami Front of House
 Mignel Figueiredo
 Lighting Technician
 Monique Springer
 Marketing Assistant
 Murray Melvin Theatre Archivist
 Dawn Reid Deputy Artistic Director
 Natsa Mandeys Bar Staff
 Natasha Freeman
 Costume Supervisor
 Natasha Gooden
 Deputy Stage Manager
 Oyin Balogun Front of House
 Paul Canova Head of Finance
 Peter Rodriguez Bar Staff
 Phil Smith Head of Finance
 Prave Maharaj Bar Team leader

Rachael Pierre Front of House
 Rena Mehta
 Bar Staff, Front of House, Kitchen Staff, Development Administrator
 (Interim)
 Richard Bullimore
 Production Manager
 Richard Parr
 Head of Stage, Production Manager, technical Manager
 Rickie Leyton Front of House
 Rita Mishra
 Assistant to Artistic Director
 Robert Eames Front of House
 Rose-Marie Christian
 Front of House
 Rupert Drew Bar Staff
 Rasseni Fisher Front of House
 Ryan Bradley Bar Staff
 Sally Goldsmith
 Director of Development & Communications
 Sally Medcalf
 Development Administrator
 Shauab Iqbal Producer
 Sarah Buik
 Company & Stage Manager
 Sanvedan Aparanti
 Freelance Digital Officer
 Serena B. Robins Project Manager, Schools and Colleges, Schools'
 Partnership Manager
 Sherain Watson
 Community Arts Apprentice
 Shreya Ulal Front of House
 Sibhatlab Kesete
 (maternity cover for Elmer Jones)
 Finance Officer
 Simon Sturgess
 Production Manager
 Stuart Saunders
 IT Systems Manager
 Surenee Chan Somchit
 Assistant Stage Manager
 Sydney Weise
 Bar Staff, Kitchen Staff
 Tamima Kirk Dresser
 Tanoh Danso Front of House
 Thalia Remy
 Administration Assistant
 Tim Trotman Stage Technician
 Titilayo Olanuga Finance Officer
 Tosin Alabi Front of House
 Tre Ramon Front of House
 Triana Keane Head of Marketing
 Unique Spencer Bar Staff
 Vee Kim Front of House
 Velma Fontaine
 Operations Coordinator
 William Humphrey Chef

STRATFORD EAST SINGERS

Abena Adofe
 Abigail Asante
 Anna Anderson
 Anne McCarthy
 Amanda Murphy
 Amer Saad
 Angel Morrison
 Angela Tuliayama
 Ann Pe-Win
 Anne McCarthy
 Annika Babla
 Anita Ranieri
 Antoinette Brown
 Achley Moire
 Acmita Naik
 Beatrice Owuru-Ansah
 Bernadette Lewin
 Beulah Edwards

Brain O'Flynn
 Barbara Phillips
 Bunmi Ayeni
 Carla Lowe
 Carmel Lewin
 Carol Ann White
 Chantal Lane
 Cindy Dawkins
 Danielle Inkster
 Debra Wallace
 David Cunningham
 Deborah Joseph
 Eileen Newman
 Elbie Cowan
 Ella Dove
 Emma Baker
 Emma Quinn
 Emmanuel Oluwanya
 Esme Cleme
 Falon Paris-Caines
 Fay Minty
 Frances De Arendse
 Geoff Archer
 Gloria Bujak
 Hannah Smith
 Hellen Ecock
 Jacqui Adeniji-Williams
 Jennifer Davidson
 Karene Wallace
 Kate Fallon
 Katy Arnell
 Kathy Boone
 Sherain Watson
 Kirsty Meehan
 Laura Purling
 Lauren Haidar
 Lira Taylor
 Maudie Wyatt
 Maureen Stevenson
 Maria Peters
 Mary Jones
 Michelle Lowe
 Naomi Blanche
 Nahila Gunaratne
 Narma Chowdhury
 Noel Dumont
 Opal Bartley
 Patrick Mahbeer
 Paddy Salter
 Paulette Maxwell
 Phyllis Grant
 Preth Rao
 Radhika Bynon
 Rafi Smallman
 Rene Alkinson
 River Shaw
 Robert Beber
 Rosemarie Collins
 Rosemarie Sutherland
 Samantha Clarke
 Selma Piro
 Sharnie Kayode
 Siobhan Larmond
 Sterre Ploeger
 Sue Cay
 Suzanne Widdup
 Sue Ellery
 Tamara Lee
 Tanya Edwards
 Teresa Carpenter
 Tom Moore
 Tricia Paton
 Wenona Phe
 Yvonne Wade
 Zhenreenah Mubringa

SUPPORTERS:

Business Supporters
 ArcelorMittal
 Bloomberg

Telford Homer
 Altair Ltd.
 Attic Storage and Removals Solution
 Countryside Properties Plc
 Devonshire Solicitors
 English Cities Fund
 Get Living London
 Hotel Novotel London Excel
 HUB Group
 Tate & Lyle Sugar Plc

SUPPORTERS:

Major Donors

Scrutton Estates Ltd.
 The Sahara Care Charitable Trust

SUPPORTERS:

Pioneers

Andrew Cowan
 Angela and Stephen Jordan
 Carol Lake
 Elizabeth and Derek Joseph
 Sabine Vinck
 And all those who wish to remain anonymous

SUPPORTERS:

Trusts and Foundations

Esme Fairbairn Foundation
 Garfield Weston Foundation
 Helen Hamlyn Trust
 Heritage Lottery Fund
 Jack Petchey Foundation
 Paul Hamlyn Foundation
 The Andrew Lloyd Webber Foundation
 The Gibbs Charitable Trust
 The Mackintosh Foundation
 The Theatre Trust
 We would also like to acknowledge the generous support of the Monument Trust.

SUPPORTERS:

The Vision Collective

Amanda and James Hochman
 Andrew and Amanda Grenville
 Barbara Ferris
 Caroline and Charles Pridgen
 Danielle Whitten
 Derek Paget
 Ed Ross
 Hazel Province
 Hedley G. Wright
 Jan and Bill Smith
 Jonathan Tyler
 Lady Stratford
 Mansell Bouquet Ltd.
 Murray Melvin
 Nick and Wendy Jakob
 Rachel Potts for Jon Potts
 Sue Fletcher
 Toni Palmer
 And all those who wish to remain anonymous

WRITERS

Aaron Gordon
 (Angelic Tales: 'Sweating it Out')
 Arvind Ethan David
 (Additional Material, The Infidel)
 Aubrey Sekhabi
 (Co-writer, Rhetorical)
 Ben Fensome
 (Angelic Tales: 'Wild Nights')
 David Baddiel (The Infidel)
 Fiona Whitelaw
 (Angelic Tales: 'Acceptable Damage')

Frank Norman
 (Finger Aint Wot They Used To Be)
 Joan Littlewood, Theatre Workshop, Charles Cilton,
 Gerry Rafferty and Members of the Original Cast
 ('Oh What a Lovely War')
 John McCann ('Spoiling')
 Joy Gharoro-Alpojotor
 (Angelic Tales: 'Sunday')
 Mpumelelo Paul Grootboom
 (Co-writer, Rhetorical)
 Paul Sirett
 (Beauty and the Beast)
 Perry Melias
 (Co-writer, Beauty and the Beast)
 Roy Williams
 (Kingston 14', Antigone)
 Stephen Hoo
 (Angelic Tales: 'Jamaica Boy')
 Wayne Nuses
 (Co-writer, Beauty and the Beast)

YOUNG PEOPLE'S WORK:

SB Festival

Charlie Sharpe
 George Hartup
 Jaydee Hervey
 Zafraan Ahmed

YOUNG PEOPLE'S WORK:

Afrovibes Curtain Raiser

Company
 Aicha Maclean
 Alex Jarrett
 Alex Uzoka
 Cameron Mutale
 Eboni Taylor
 Ella Catterick
 George Hartup
 Isabel Cromwell
 Jamie Halliwell
 Jaydee Hervey
 Kiara Watton
 Kyron Marie-Freeman
 Marijana Lucic
 Otis Meyer-Romane
 Ryell Williams
 Seetal Kaur
 Tianna Mullings
 Xavier Baptiste
 Xsara Baptiste

YOUNG PEOPLE'S WORK:

Antigone Festival

Baxton School

Adrian Sobiech
 Alessia Anton
 Avair Aziz
 Dante Walters
 Denar Kalandinar
 Faical Ezat
 Hecham Rajeb
 India Odey
 Jada Johnson
 Jacira Domingo Pinto
 Jaychelle Smith
 Lauren French
 Lia Beg
 Liberty Aigbedion
 Lyone Ferreira De Almeida
 Matar Rainy
 Miguel Marques
 Natasha Moreland
 Priscilla Adebisi
 Reece Cochrane
 Roxana Filkan
 Sagal Hachi
 Sherlei Fernandez
 Sonny Krishna

Suran Alebiolu
 Victoria Rockaite
 Zech Lovell
 Lister Community School
 Aaliyah Amin
 Fowzia Ahmed
 Halima Hashim
 Kangana Parmar
 Parnika Diggel
 Tahmid Khan
 Umar
 Zainab Namatovu
 Zaynab Yessouf
 Zubayer Uddin
 Plasket School Group 1
 Afrana Yarmun
 Ameerah Dalal
 Amira Moller
 Arij Khan
 Arooj Naeir
 Aynha Shahid
 Aytawriya Balachandran
 Hibo Abukar
 Laila Ali
 Leanne James
 Manjot Sangha
 Manujaa Varikaran
 Mariam Malik
 Maryam Mohamed
 Moolkan Gul
 Nahida Khochal
 Narmin Islam
 Neha Rasool
 Rabia Qadri
 Ribana Mohamed
 Saba Mahmood
 Safa Butt
 Shaheen Hifzullahman
 Shani Douglas
 Sumaya Shafiq
 Sumayyah Islam
 Tarneem Ali
 Umma Hussain
 Urooj Rafiq
 Zaina Quadir
 Plasket School Group 2
 Britney Tetteh
 Haleema Sharief
 Leili Azizi
 Mariam Shaikh
 Mehrabeen Hairroo
 Saura Bano
 Sundar Ichfaq
 Zainab Hussain
 Young and Talented
 Ayanna Christie-Brown
 Walthamstow School for Girls
 Wanstead High School

Soraya Laville
 Tiana Gravitic

YOUNG PEOPLE'S WORK:

Creatives and Facilitators

Chair: Agbo, LAB Director
 Dawn Reid, NT Connections
 Director
 Erica Jeffrey, LAB Director
 Jan Sharkey-Dodds, LAB facilitator
 Karlos Coleman, Youth Theatre
 Director
 Kat Francis, Director and Mentor,
 Poets Platform
 Lynette Linton, LAB Director
 Serena B Robins: Antigone
 Festival, Producer/Dramaturg,
 LAB Director
 Suzann McLean, Youth Theatre
 facilitator

YOUNG PEOPLE'S WORK:

Education Partners

O-19 Achievement Partner, Early
 Intervention and Progression,
 London Borough of Newham
 Behaviour Support & Attendance,
 Children & Young People's
 Services, London Borough of
 Newham
 Birkbeck University of London
 Brampton Academy
 Buxton School
 Chobham Academy
 City University
 Cumberland School
 East 15 Acting School
 Forest Gate Community School
 Kingford Community School
 LAMDA
 Langdon Academy
 Lister Community School
 Liverpool University
 London College of Fashion
 Plasket School
 RADA
 Rokby School
 Rose Bruford College of Speech
 and Drama
 Royal Central School of Speech
 and Drama
 School 21
 St Bonaventure's
 UEL
 University College London
 University of East London
 Walthamstow School for Girls
 Wanstead High School

YOUNG PEOPLE'S WORK:

HE and FE Placements

Ben Carter, LAMDA
 Caroline Murray, Rose Bruford
 College of Speech and Drama
 Caroline Murray, Rose Bruford
 College of Speech and Drama
 Celine Ducret, London College
 of Fashion
 Hannah Ballard,
 East 15 Acting School
 Hannah Strudwick, LAMDA
 Jake Mawhinney, LAMDA
 James Parker,
 East 15 Acting School
 James Parker, RADA
 Jordan Richardson, LAMDA
 Lola Olasimbo, Liverpool University
 Mylee Cameron,
 East 15 Acting School
 Pete Lambie, Royal Central School

of Speech and Drama
 Rianna Shanice Charles,
 Rose Bruford College of Speech
 and Drama
 Soraya Laville, UEL

YOUNG PEOPLE'S WORK:

Monologue Workshops

Ahmad Johnson
 Alex Uzoka
 Andrew Keerchan
 Brenock O'Connor
 Calum Carr
 Edy Maniata
 Elin Alexander
 Elise-Aimee Van Den Hoek
 George Hartup
 Ife Oyerinde William
 Jaydee Hervey
 Lamarr Nemhhard
 Levi Low
 Malachi Blake
 Michael Bunani
 Owen Edmonds
 Peri McDonald-Baptiste
 Tiana Gravitic

YOUNG PEOPLE'S WORK:

Newham Mayors

Show Company

Anna Johnson
 Ife Oyerinde William
 Joshua Burton
 Joshua Burton
 Olivia Ndila
 Olivia Ndila
 Sam Dunstan
 Stephen Teelan

YOUNG PEOPLE'S WORK: NT

Connections Youth Companies

Theatre Royal Stratford East

Alex Jarrett
 Cameron Mutale
 Elijah Walker
 Ella Catterick
 George Hartup
 Jamie Halliwell
 Jaydee Hervey
 Johnson Fanijyan
 Kiara Watton
 Kyron Marie-Freeman
 Marijana Lucic
 Marijana Lucic
 Munotida Chaya
 Otis Meyer-Romane
 Otis Meyer-Romane
 Seetal Kaur
 Tianna Mullings
 Xavier Baptiste

JADA Young Company

Callum Popham
 Danny Whitelaw
 Elliot Stavrinou
 Emmanuel Oluwanya
 Jacob Davies-Giles
 Maddie Stavrinou
 Mari Beasley
 Megan Walker
 Sarita Aggarwal
 Will Causton
 Acad Zafar
 Christine Bulawa
 Connor Ifrim
 James Thompson
 Jasmine Daoud
 Katie George
 Kevin Gropari
 Lami Rorain

Salman Rafiq
Zafraan Ahmed
Roleby School
Aaron Thomas Gordon
Abdirahman Irmali
Abdullah Bhaijee
Abid Khan
Andre Veira Anjos Medeiros Cabral
Arafat Uddin
Bilal Khan
David Yusuf
Email Poltorak
Emmanuel Fakhru
Hamza Mohamed
Jocelino Pereira
Juned Ahmed
Leef Vickery
Lukas Sakalauskas
Marian Hristov
Mohammad Wadud
Muhibur Rahman
Murawar Zhai
Rajul Choudhury
Silent Mur
Silvio Roberto Silva Oliveira Kameo
Zahidullah Shukrolah
Zayd Kouira
Tomorrow's Talent
Alexander Bloom
Amy Trigg
Anna Maria Acevedo
Christopher Tierney
Danny McNamara
Elin Jacobs
Gavin Wilkinson
Hazel Ellender
Holly Hooper White
Jasmine Leanne Gaterell
Jerrica Moore
Joseph Bennett
Mark Ellis
Scott Olley

YOUNG PEOPLE'S WORK:

Partners

Afrobeats
Art Award
Catalyst in Communities
Frantic Assembly
Jack Petchey Foundation
London Borough of Newham: Every
Child a Theatre Goer
London Theatre Consortium: Young
People's Forum
Mousetrap Foundation
National Theatre
Newham Education Business
Partnership
Open Mind
Participatory Arts London (PAL)
Pilot Theatre Company
Stage Studio
Stratford Circus
Stratford Rising
The Challenge
The Globe
Tri Force Promotions
Workplace, Newham
Young and Talented

YOUNG PEOPLE'S WORK:

Flashet Enrichment Programme

Afrana Yarmir
Ameeerah Dalal
Amira Moller
Arij Khan
Arooj Nacir
Aynha Shahid
Aynwariya Balachandran
Britney Tetteh
Haleema Sharief
Hibo Abukar

Kiara Watson
Laila Ali
Leanne James
Leili Azizi
Manjot Sangha
Manujaa Vaidikaran
Mariam Malik
Mariam Shaikh
Maryam Mohamed
Mehrabeen Hairrui
Mockan Gul
Nahida Kherhal
Narmin Islam
Neha Rasool
Neha Rasool
Rabia Qadir
Rihana Mohamed
Saba Mahmood
Safa Butt
Saira Bano
Shabheen Hifur Rehman
Shani Moller
Sumaya Shafiq
Sumayyah Islam
Sundus Irfan
Tasneem Ali
Tasneem Ali
Umma Hussain
Urooj Rafiq
Zaina Qadir
Zainab Hussain

YOUNG PEOPLE'S WORK:

Poets Platform Company

Angelina Chudi
Brianna Herbert
Charles Locker
Christian Smith
Elise Joseph
Honesty Haynes - Williams
Isiah Preced
Jacqui Adeniji - Williams
Marvellous Fayose
Michael Elcock
Mohammad Barceer
Omar Bynon
Ruseni Fisher

YOUNG PEOPLE'S WORK:

Summer School 2014

Abigail Jankovic
Alex Jarrett
Alex Uzoka
Alexandra Sitaru
Cameron Mutale
Charlie Sharpe
Elijah Walker
George Hactrup
Isabel Cromwell
Jake Swan-Walton
Jaydee Hervey
Johnson Paniyan
Karimah Khanum
Kaylen Newell
Kyrion Marie-Freeman
Marijana Lucic
Michael Elcock
Munotida Chaya
Olivia Ndila
Ryell Williams
Tiana Gravillie
Tiana Gravillie
Tianna Mullings
Zafraan Ahmed

YOUNG PEOPLE'S WORK:

Volunteer Placements

Dan Macor
Delvina McKinon
Joshua Burton
Mackenzie Teague
Philip Morgan

Philip Morgan
Renu Mehta
Seraya Laville
Thalia Remy
Tiana Gravillie

YOUNG PEOPLE'S WORK:

Young Artists LAB

Anna Johnson
Anyebe Anteyi
Aude Konan
Frank Atero
Franciska Haberlach
Fredrick Menrah
Holly Cooper
India Crawford
Indra Van Derploeg
Jamaal Norman
Jasmin Anderson
Jennifer Lee
Jerome Boothe
Jonathan Luwagga
Kemi Lofimakin
Kitt Barrie
Kwaku Kyee Manu
Latanya peterkin
Lauren King
Lenox Kamabamba
Leo Akwudike
Lhaca Summers
Marilyn Friday
Michael Amodu
Mohammad Barceer
Nicky Nwene
Ray Dunbar
Robbie Shaw
Sandra Wilson
Sarah Yusufu
Sheila Aday
Shivon Watson
Tegan Imbert
Tanya Olatunji
Urban Hayo
Zoe Hunter-Gordon

YOUNG PEOPLE'S WORK:

Young Leaders

Adem Holness
Angelina Chudi
Anna Johnson
Brenda Kaiteri
Caroline Wilson
Ceylan Yorganci
Darien Charles
Deborah Oyelade
Dilip Banal
Ella Harget-Dach
Frank Atero
Georgia Stableford
Grace Radford
Holly Cooper
Humaira Wadwala
Ifa Oyerinde William
Indra Van Der Ploeg
Jack Mathews
Jacqui Adeniji-Williams
Joana Nartari
Jordan Ramsey
Katherine Glyde
Kylie Slevin
Lauren La Rocque-Simpson
Mark Ramsey
Marvellous Fayose
Maya Crute Jones
Naomi Money
Nicole Abraham
Olivia Murray
Peri McDonald-Baptiste
Rae Levine
Shreya Ukil
Temiola Arhini
Zafraan Ahmed

YOUNG PEOPLE'S WORK:

Youth Theatre Members

Abigail Jankovic
Alex Jarrett
Alex Uzoka
Alexandra Sitaru
Blair Gyabaah
Brianna Herbert
Cameron Mutale
Charlie Sharpe
Ebony Taylor
Elijah Walker
Elizabeth Cromwell
Ella Catterick
George Hactrup
Isabel Cromwell
Jake Swan-Walton
Johnson Paniyan
Karimah Khanum
Kaylen Newell
Kyrion Marie-Freeman
Luke Kiraya
Marijana Lucic
Munotida Chaya
Oti Meyer-Romane
Ruhad Uddin Ahmad
Ryell Williams
Sacha Bonner
Seetal Kaur
Tia Dunnworth
Tiana Gravillie
Tianna Mullings
Torrelle Standford
Zafraan Ahmed

YOUNG PEOPLE'S WORK:

Year 10 Work Experience

Abdel Mindia
Kingsford Community School
Beamari Alarva Suerte
St. Angela's RC School
Elijah Giraudel, Roleby School
Emmaliane Akua Nyarko
Kingsford Community School
Georgia Jefferson
Brampton Manor Academy
Grace Jamieson, Little Ilford School
Hristo Solakov, Royal Dock School
Jada King, Lister Community School
Joanna Gomer, Cumberland School
Johnson Paniyan, Roleby School
Kricelle Bacilio
St. Angela's RC School
Mudeeha Sharief, Placket School
Maria Badmou, St Edward's C of E
Comprehensive Secondary School
Maya Ochieng, Forest Gate School
Nadia Hamani, Forest Gate School
Peri McDonald-Baptiste
St Bernard's High School
Sangwani Harawa, St Matthew
Academy

YOUNG PEOPLE'S WORK:

Workshop Assistants

Charlotte Law
Darnell Shakespeare
James Cull
Sherelle Jones

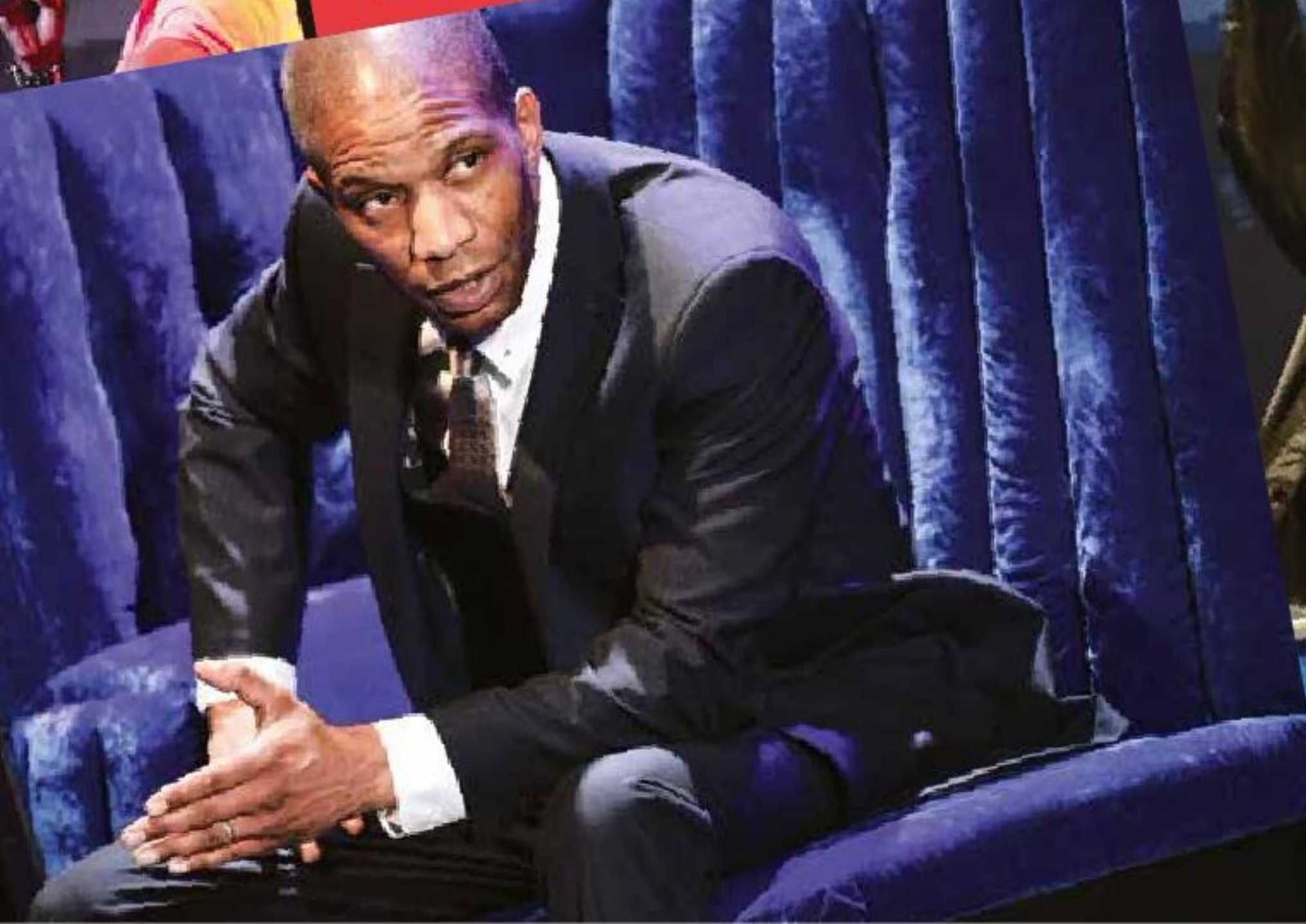
Theatre WORKSHOP BAR

THEATRE ROYAL BAR
APRIL LISTINGS
COMIC MONDAYS
TENNER TUESDAYS
COME DINE WITH US WEDNESDAYS
THIRSTY THURSDAYS
FUNKY FRIDAYS
LIVE LOUNGE SATURDAYS
UNDISCOVERED SUNDAYS
FREE ENTRY 7 DAYS A WEEK
AWARD-WINNING CARIBBEAN FOOD!

THE THEATRE WORKSHOP BAR
December LISTINGS
COMIC MONDAYS
THIRSTY THURSDAYS
FUNKY FRIDAYS
TENNER TUESDAYS
UNDISCOVERED SUNDAYS
FREE ENTRY
CHRISTMAS EVENTS
STRATFORD EAST

THE THEATRE WORKSHOP BAR
March LISTINGS
COMIC MONDAYS
THIRSTY THURSDAYS
FUNKY FRIDAYS
TENNER TUESDAYS
PUB WEDNESDAYS
UNDISCOVERED SUNDAYS
MARCH HIGHLIGHTS
FREE ENTRY
STRATFORD EAST

THE THEATRE WORKSHOP BAR
February LISTINGS
COMIC MONDAYS
THIRSTY THURSDAYS
FUNKY FRIDAYS
TENNER TUESDAYS
PUB WEDNESDAYS
UNDISCOVERED SUNDAYS
VALENTINES SPECIALS
FREE ENTRY
STRATFORD EAST



Designed and produced by blue lime design
www.bluelimedesign.co.uk

www.stratfordeast.com A PEOPLE'S THEATRE

A large print
version is
available on
request